



Audit	Date	Changes	Created by	Controlled by	Approved by
1	06.03.16	New Document	RN	DAH	GK
2	06.01.23	Updated	SA	AK	OCA

- Installation of the Unit ..... 1
- Start Up ..... 2
- Operating HPU ..... 3
- Stopping the Unit ..... 4
- Hydraulic - Hoses and Connections..... 5
- Troubleshooting ..... 6

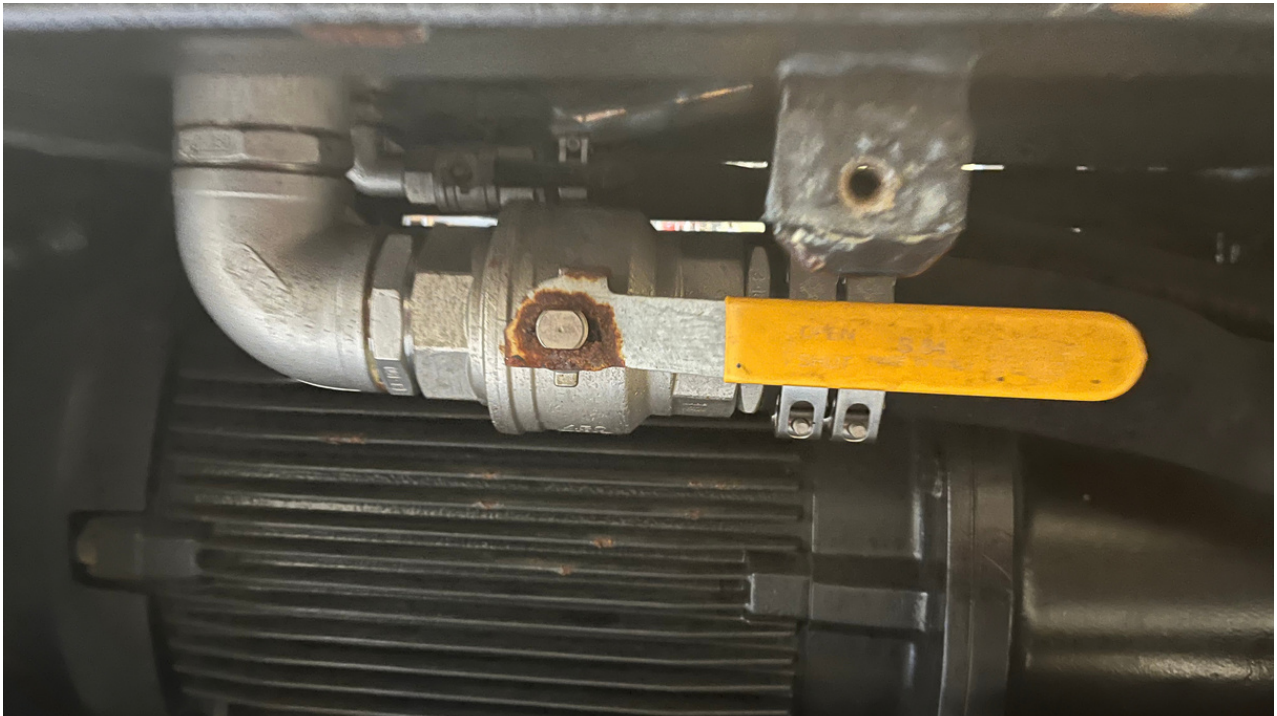
## Power Cable:

- Located in the back of the unit, standard length 35m
- **Power cable hook up to Rig can only be installed by the Rig Electrician Offshore**
- Check Z-015 that pre settings on unit are according to the rig supply
- When installed and ready follow steps in the guide for rotation direction on the EL. Motor



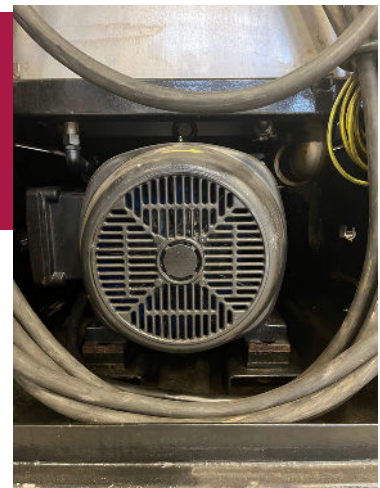
- Workshop power output 400V 125A 50Hz
- Adjust engine protection relay accordingly
- Performed by an electrician

1. Check that the valve from the tank is in open position



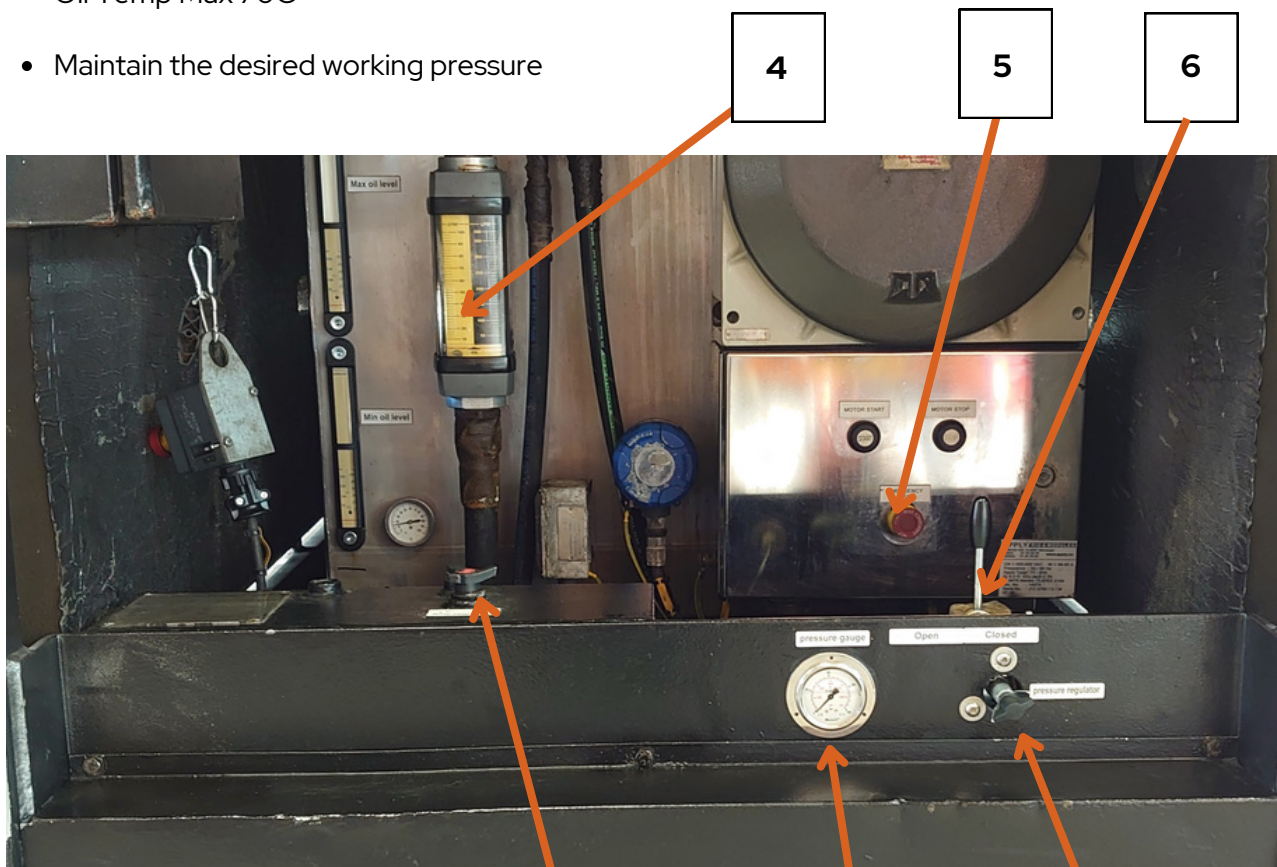
2. Check the level of hydraulic oil in the tank. The oil level must not be below the level sensor. The oil level should be visible on the upper level glass.
3. Check all connections for leaks
4. Check the pressure regulator, set at zero. "Turned all the way out".
5. Check that the flow valve is shut before startup. "Turned all the way in".
6. Check rotation of the motor.

- Start and stop quick to check rotation of the engine.
- Motor should turn clockwise, viewed from the rear.
- If the engine rotates the wrong way, - Contact Electrician.
- PHASE must be inverted





- Dedicate a person to supervise the HPU and check periodically the unit
- Check for 'unknown' mechanical sounds
- Check for leaks
- Oil Temp Max 70C
- Maintain the desired working pressure



*Regulators located in front of unit.*

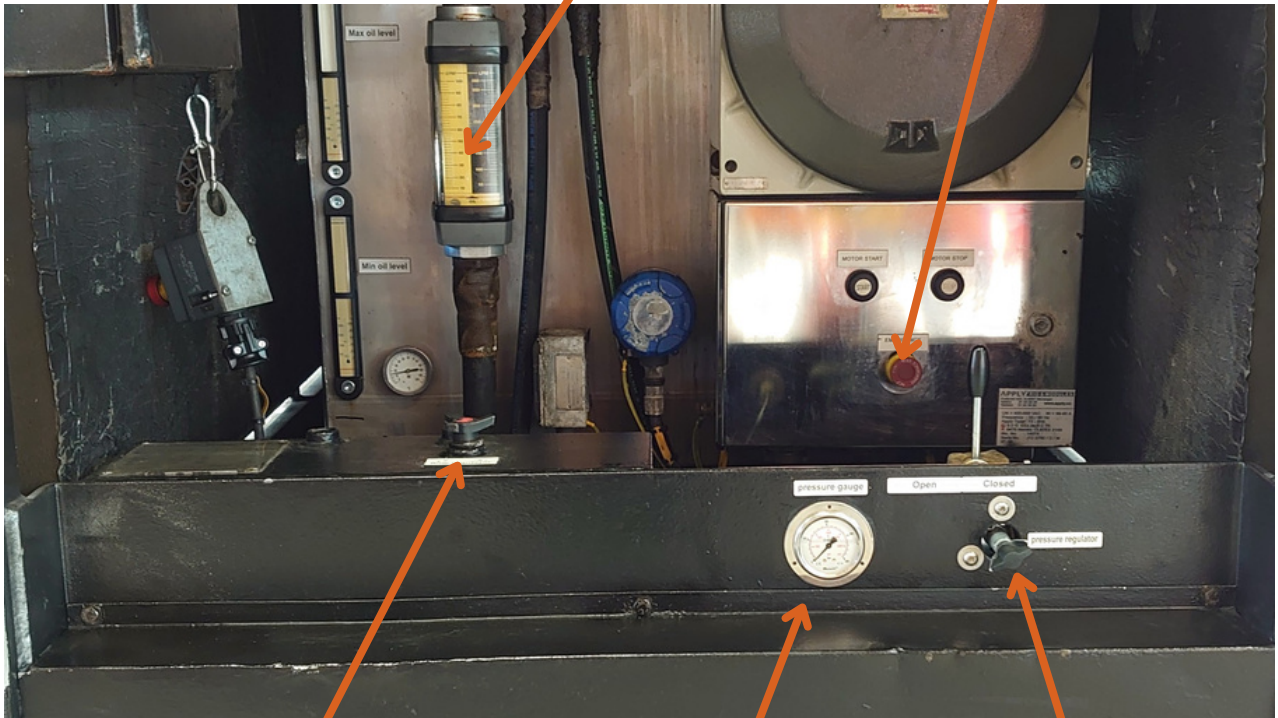
- 1. Pressure Regulator
- 2. Pressure Gauge ( Manometer )
- 3. Flow Regulator
- 4. Flow Meter
- 5. Stop Button
- 6. On / Off Pressure

# STOPPING THE UNIT

- Reduce the operating pressure to zero
- Close the valves
- Press the stop button on the panel

• Flow Meter

• Emergency Stop



• Flow Regulator

• Pressure Gauge

• Pressure Regulator

- Standard hydraulic connections on Unit:
- Tema Offshore series with safety lock.
  - **Pressure** : 3/4" Tema
  - **Return** : 1" Tema
  - **Leak** : 1/2" Tema





- **Check that the emergency stop is out.**
- Located at the starter panel and at the remote shutdown cable/ box



- **Check the power supply to HPU**
  - Contact electrician

- **Check the oil level in the tank.**
  - Relay in EL. cabinet triggered, add oil.



- **Check temperature of oil.**
  - Shut down relay triggers at 75C.
  - Wait until oil is below 60C, adjust cooling fan rpm up.
- Regulator for adjustment of the cooling fan. - Normally set at 90%

